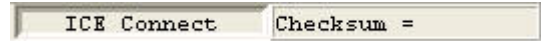


Preface

The purpose of this article is to cope with problems when using software version that is under HY-IDE 1.07 or the VDD was supported by external power source.

After connecting PC to ICE (See Pic 1), click the right bottom corner of the software and it will show “ICE Connect” message.



When PS2 connection was removed and reconnected again, re-click this button. “ICE not Connect” message was shown at the bottom right corner while ICE could not carry out any emulation.

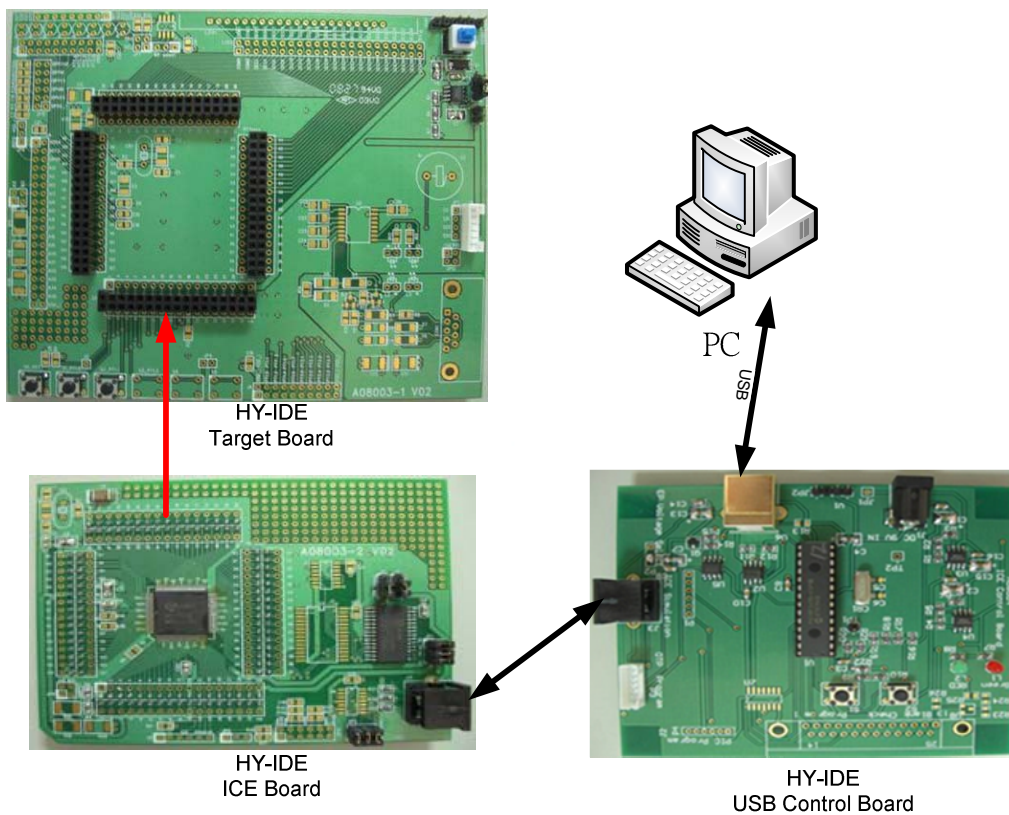


Figure 1 Diagram of ICE Connection

Proposed Solution

- Following below 3 correction steps to solve ICE not connect. problem

Re-install HY-IDE software
 Re-install USB driving software
 Restart IC

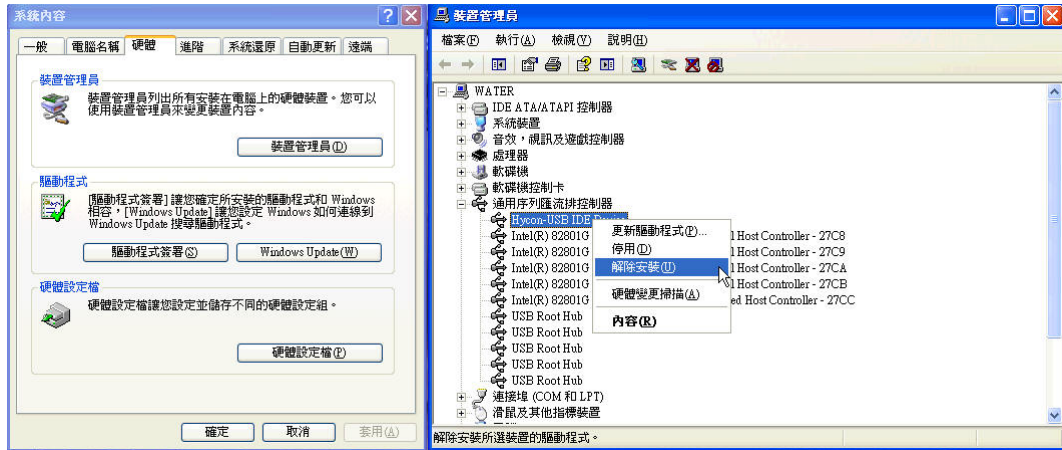
■ **Revision Steps:**

◆ **Re-install HY-IDE software**

- Remove the former revision of HY-IDE software.
- Re-install Hy-IDE the V1.08 above program edition

◆ **Re-install USB driving software**

- Please follow below steps to update the latest USD driving software.
- System Properties→Hardware→Device Manager→Universal Serial Bus Controllers→Hycon-USB-IDE Device→Uninstall



- Click “confirm” to uninstall this configure.



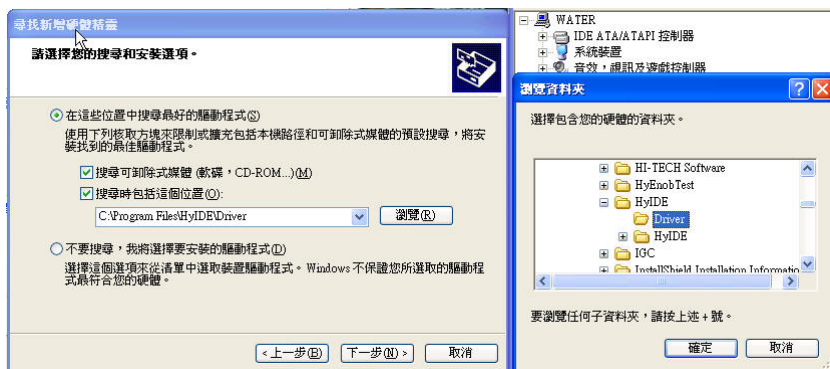
- Return to “Device Manager” page and click “Scan for Hardware Changes” button.



- After scan, “Found New Hardware Wizard” page would be shown, choose “From the List or Specific Location (Advance)” and click “Next”



- After “Browser”, choose the install location for HY-IDE 1.08, default route as C:\Program Files\HyIDE\Driver, then click “Confirm” to continue.



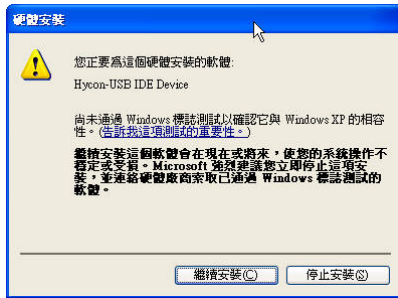
- Waiting for “Found New Hardware Wizard” search.



- After search, several driving programs would be found as in below picture. Please choose the default route of HY-IDE 1.08 as C:\Program Files\HyIDE\Driver\hycondriver.inf, then click “Next” to continue.



- Please choose “Continue with Installation” once the below window appeared.



- The driving program installation has finished when the below window appeared.



◆ **Restart IC**

- In case of providing power to IC by 3V internal control board, the bug of ICE not connect had been corrected on the condition of removing PS2 and re-connected again.
- In case of providing power to IC by external voltage, after removing PS2, please click RST button (A08003-1 V02 S0_RST button) first before re-connecting, then click the program bottom right corner so that it would show the status of “ICE Connect”.